



## Mouse anti cyclic adenosine monophosphate (cAMP) (Biotinylated) Monoclonal Antibody

Alternative Name(s): nan

### Order Information

- **Description:** cyclic adenosine monophosphate (cAMP) (Biotinylated)
- **Catalogue:** 500-953B
- **Lot:** See label
- **Size:** 100ug/200ul
- **Host:** Mouse
- **Clone:** ABM486
- **Application:** IHC(P), WB
- **Reactivity:** Hu, Ms, Rt

### ANTIGEN PREPARATION

A chemically linked 3', 5'-Cyclic Adenosine Monophosphate (cAMP)

### BACKGROUND

Cyclic adenosine monophosphate (cAMP) is an intracellular mediator that plays an important role in a variety of hormone signaling. It's been known as an universal cytoplasmic second messenger in drug discovery due to the involvement of G-Protein Coupled Receptors (GPCR) signaling events where the receptors are activated by different ligands, such as neurotransmitters, hormones, ions, small molecules, peptides, etc.

### PURIFICATION

The mouse IgG is purified by Protein A-Affinity Chromatography according to Isotyping

### FORMULATION

This affinity purified antibody is supplied in sterile Phosphatebuffered saline (pH7.2) containing antibody stabilizer

### SPECIFICITY

This antibody is biotinylated at 1:4-6 molar ratio. It recognizes camp, not cross react with 5'-AMP, 5'-ADP, 5'-ATP or 3', 5'-cGMP.

### STORAGE

The antibodies are stable for 24 months from date of receipt when stored at -20oC to -70oC. The antibodies can be stored at 2oC-8oC for three month without detectable loss of activity. Avoid repeated freezing-thawing cycles.

### APPLICATIONS/SUGGESTED WORKING DILUTIONS\*

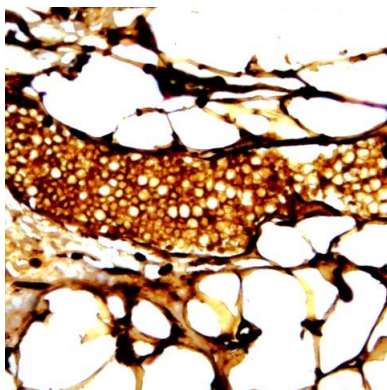
- Western Blot: 0.1-1 µg/ml
- ELISA: 0.01-0.1 µg/ml
- Immunoprecipitation: 2-5 µg/ml
- IHC: 2-10 µg/ml
- Flow cytometry: Not tested
- Molecular Weight: nan
- Positive Control: Kidney Tissue
- Cellular Location: Cell Membrane

\*Optimal dilutions should be determined by researchers for the specific applications.

### FOR RESEARCH USE ONLY.

AbboMax, Inc 2528 Qume Drive, Suite 8, San Jose, California 95131, USA  
1 408-573-1898 (Tel). 1 408-573-1858 (Fax). [www.abbomax.com](http://www.abbomax.com) [info@abbomax.com](mailto:info@abbomax.com)

#### DATA ATTACHMENTS



Immunohistochemistry: Human Lung carcinoma (FFPE) stained with Mouse anti-cAMP(Biotinylated) (Cat# 500-953B) at 1:200 for 10 min @ RT. Staining of formalin-fixed tissue requires boiling tissue sections in 10 mM Citrate Buffer, pH 6.0 for 10 min followed by cooling at RT for 20 min.

#### REFERENCES

#### FOR RESEARCH USE ONLY.

AbboMax, Inc 2528 Qume Drive, Suite 8, San Jose, California 95131, USA  
1 408-573-1898 (Tel). 1 408-573-1858 (Fax). [www.abbomax.com](http://www.abbomax.com) [info@abbomax.com](mailto:info@abbomax.com)